

Customer :

customer

Customer part :

customer part

Comment :

Comment

S1=2.23

S2=2.79

Tmax=467

Tp S2=506.0

PI=0.44

HI=78

Sample =1725.30

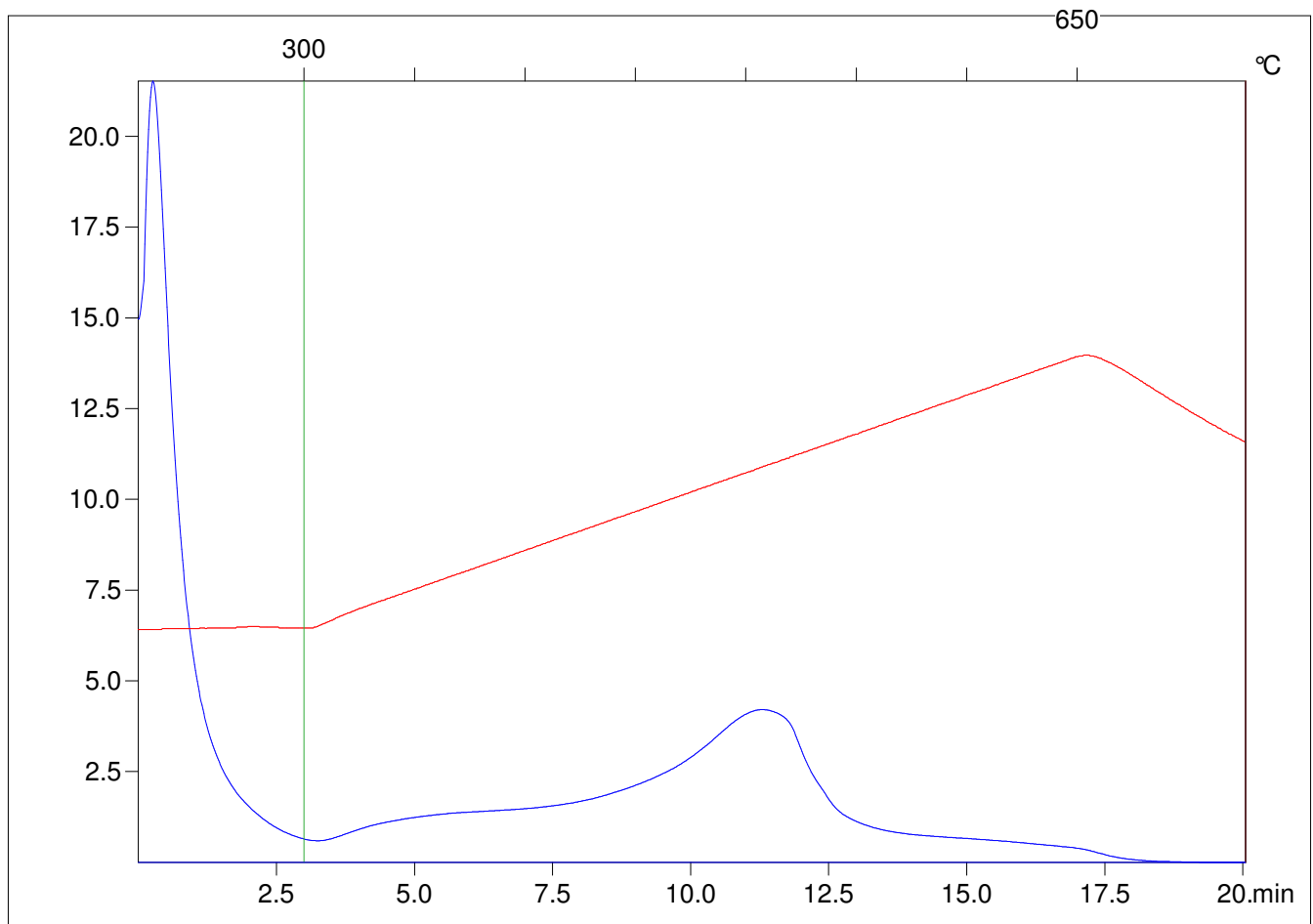
Method =Bulk Rock

Cycle=Basic

KFID(10*9)=1444

Qty =70.5

TOC=3.56



C:\VINC\PK2_1792\PK038.R00 : FID pyrolysis graphic

State

Pyro Status

Oxi Status